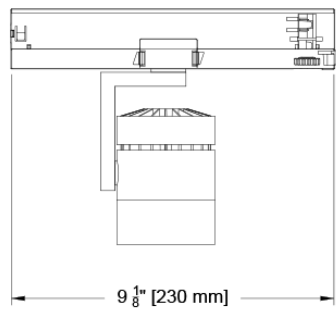
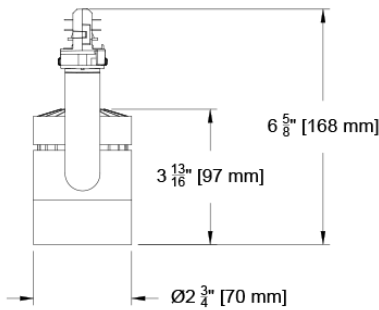


## The Yashar Family

Welcome to the Yashar Mains Mosaic Medium track accent light, available in 120 volts. The yoke mounted Mosaic Medium heads feature integral drivers mounted in the track adaptor. Available driver types include 0-10 volt, DALI and phase dimming options. A higher flux version is available in the Yashar Mains Mosaic Large Head. You have found the Yashar Mains Mosaic Medium track head compatible with Yashar Mains Track. We hope that you enjoy the details.

### Yashar Mosaic Medium Head-Track Mount



PROJECT:

TYPE:

SPECIFIER:

DATE:

### Key Points (YSMH-MSC-M)

#### Housing

- Track accent head for use in Yashar Mains Track.
- Die-cast aluminum housing with twist off bezel assembly for access to accessories and optics.
- Available in Black or White painted finish.
- Yoke mounted head, adjustable 360° degree rotation and 90° degree tilt.
- Track mounted with integral drivers in track adaptor fitting.

#### Source / Optics

- 4 beam spreads - 16°, 22°, 35° and Wall Wash Options Available
- Fixture can take up to two lens accessories.
- Up to 1541 delivered lumens
- <2 MacAdams Ellipses (<2 SDCM) for fixed white
- 90+ CRI, 60+ R9 Standard, 95+ CRI, 90+ R9 available with Ambient Dim option
- CCT available in 2400K, 2700K, 3000K, 3500K, 4000K
- **TITLE 24** Fixture supports CA Title 24 compliance meeting JA8 requirements.
- Lifetime: L87B3>55,000 hours at 40°C Ambient

#### Driver And Control

- 120 volt.
- 0-10 volt, phase and DALI. DALI control enables individual control of each fixture.
- For track mount heads, 0-10 volt dimming control provides single zone of dimming control on 120 volt (2 or 3 circuit track) as the circuits are combined on the 0-10 volt control side. For two circuit applications ELV/Triac drivers are available to dim each circuit separately as there is a separate neutral for each circuit. We do not recommend using the ELV/Triac drivers in three circuit applications, as the three circuits share a common neutral. Refer to YSMT cutsheets for details on voltage and circuiting.

Ordering Codes

PROJECT: SPECIFIER:  
DATE: TYPE: QUANTITY:

Ordering Code Example: YSMH-MSC-M-C14-35-16-TD1-B-91L

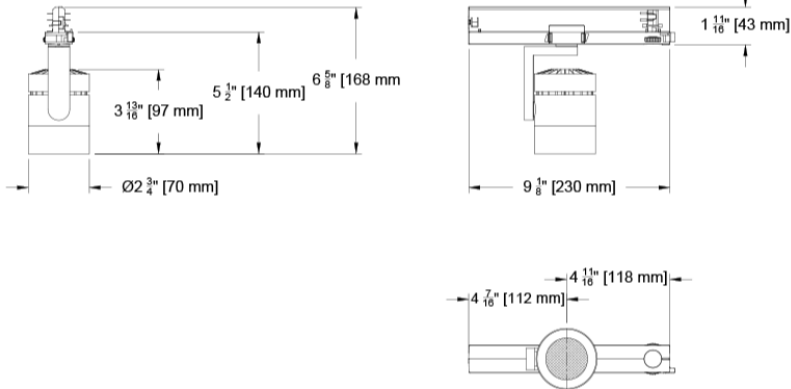
FIXTURE	SOURCE / WATTS	CCT	BEAM	DRIVER / CONTROL	HEAD FINISH	LENS ACCESSORIES
YSMH-MSC-M						
Yashar Mains Mosaic Head - Medium	<div>Citizen</div> <div>C14 14W 1119Lm* 90+CRI, 60+R9</div> <div>C20 20W 1541Lm* 90+CRI, 60+R9</div> <div>CA Title 24 Compliant</div> <div>* Based on 35° Beam</div>	<div>24 2400K</div> <div>27 2700K</div> <div>30 3000K</div> <div>35 3500K</div> <div>40 4000K</div>	<div>16 Spot</div> <div>22 Narrow Flood</div> <div>35 Flood</div> <div>WW Wall Wash</div>	<div>TD1 0-10V 2.0%, (120-277V) linear</div> <div>TD2 DALI-2 1.0%, (120-277V) linear</div> <div>TD3 ELV/Triac 5.0%, (120-120V) linear</div>	<div>B Black Paint</div> <div>W White</div> <div>Note: Aperture Trim Bezel is black in all finishes.</div>	<div>Reflector (lamp) Media</div> <div>91L Solite</div> <div>97L Black Hexcel Louver</div> <div>XXL Other reflector (lamp) media*</div> <div>XB Cross Baffle</div> <div>*Not applicable with Wall Wash</div> <div>LENS ACCESSORY VISUAL GUIDE LINK</div>

## Dimensions

### Yashar Mosaic Medium Track Head

#### Standard Mount

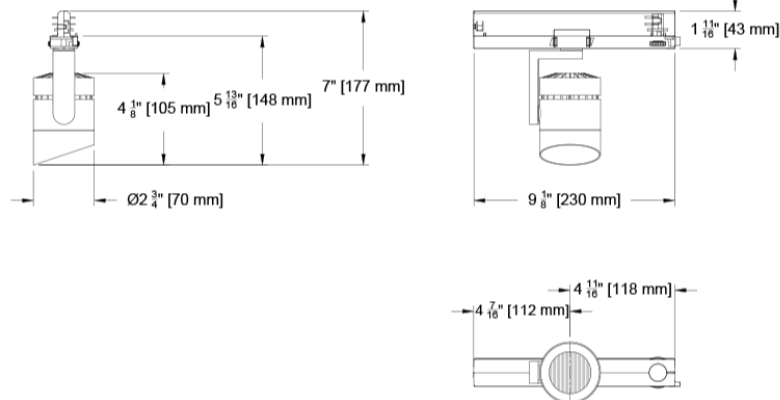
(YSMH-MSC-M-)



### Yashar Mosaic Medium Track Head

#### Standard Mount / Wall Wash

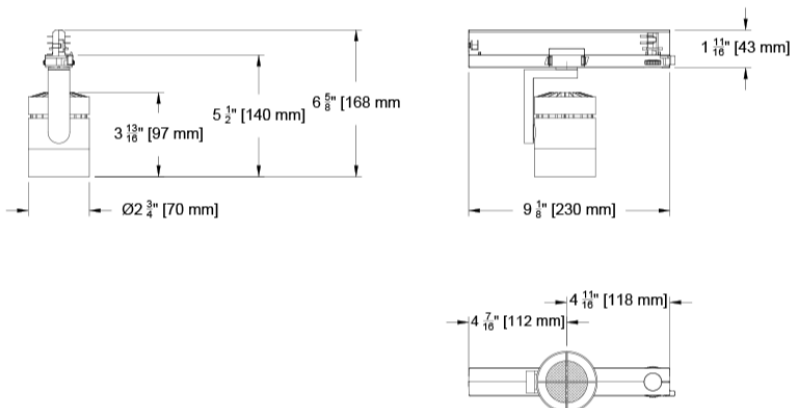
(YSMH-MSC-M-WW)



### Yashar Mosaic Medium Track Head

#### Standard Mount/Cross Baffle

(YSMH-MSC-M-XB)



Photometric Table All data below are delivered lumens based on goniometer measurements of production representative product. All lumen values can vary +/- 10% from LED manufacturer rated nominal flux.

Round Beamspreads		16°				22°				35°			
Source	System watts (W)	Delivered Lumens (lm)	Lumens/ Watt	Peak CD	10% Field	Delivered Lumens (lm)	Lumens/ Watt	Peak CD	10% Field	Delivered Lumens (lm)	Lumens/ Watt	Peak CD	10% Field
Citizen C14	14	1090	78	7991	35°	1107	80	5425	52°	1119	81	3011	60°
Citizen C20	20	1475	74	10905	35°	1508	75	7287	53°	1541	77	4094	61°
CCT Multiplier		Beam angle				Beam angle				Beam angle			
CCT	Citizen	90 75 60 45 30 15 0 15 30 45 60 75 90 15.9°				90 75 60 45 30 15 0 15 30 45 60 75 90 21.8°				90 75 60 45 30 15 0 15 30 45 60 75 90 34.5°			
2700	0.95												
3000	1.00												
3500	1.02												
4000	1.03												
All measurements are delivered lumens based on 3000K unless otherwise noted below.													

ISO cd Plots based upon C20 Source. Refer to photometry tab on product page for exact ICO cd plot and IES files.

Color Data

All data below are delivered lumens. Color and flux information based on goniometer measurements of production representative product. All values can vary +/- 10% from LED manufacturer data range as listed on their datasheet.

Citizen Source C14, C20

- <2 MacAdam Ellipse (<2 SDCM)
- 90+ CRI and RF
- 60+R9, Hue Bin 1

